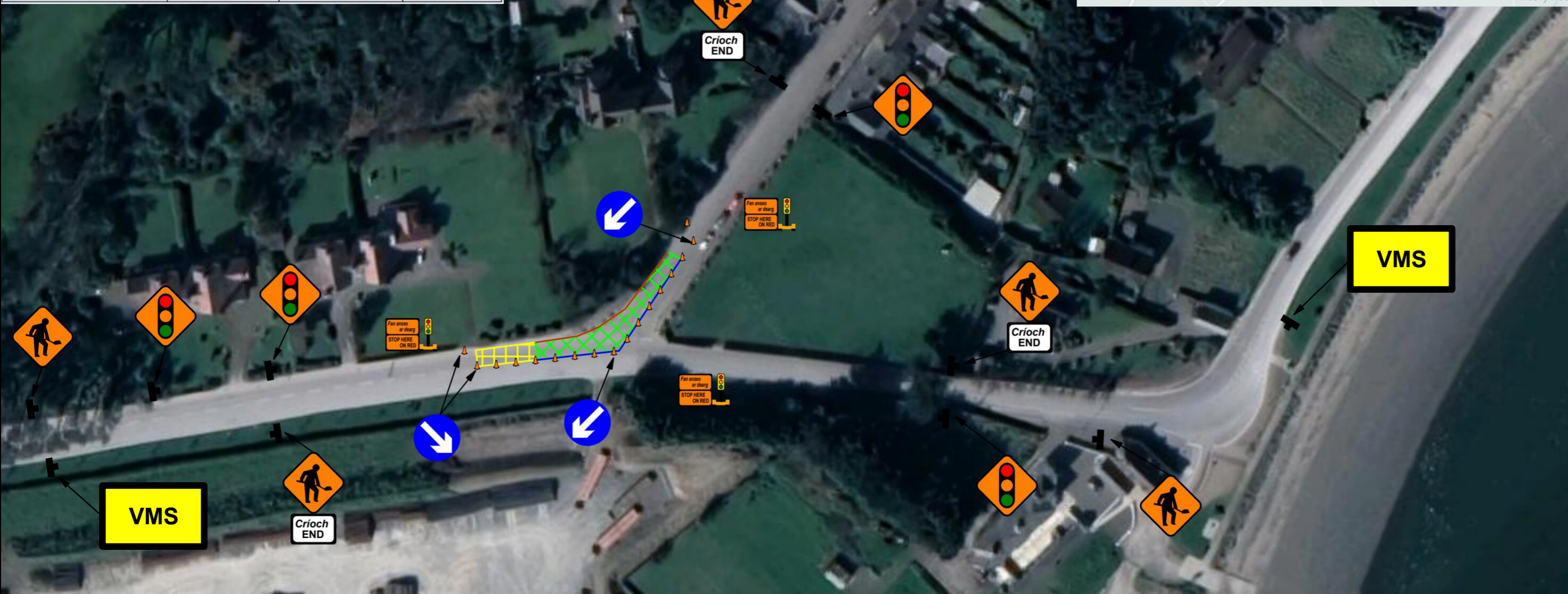
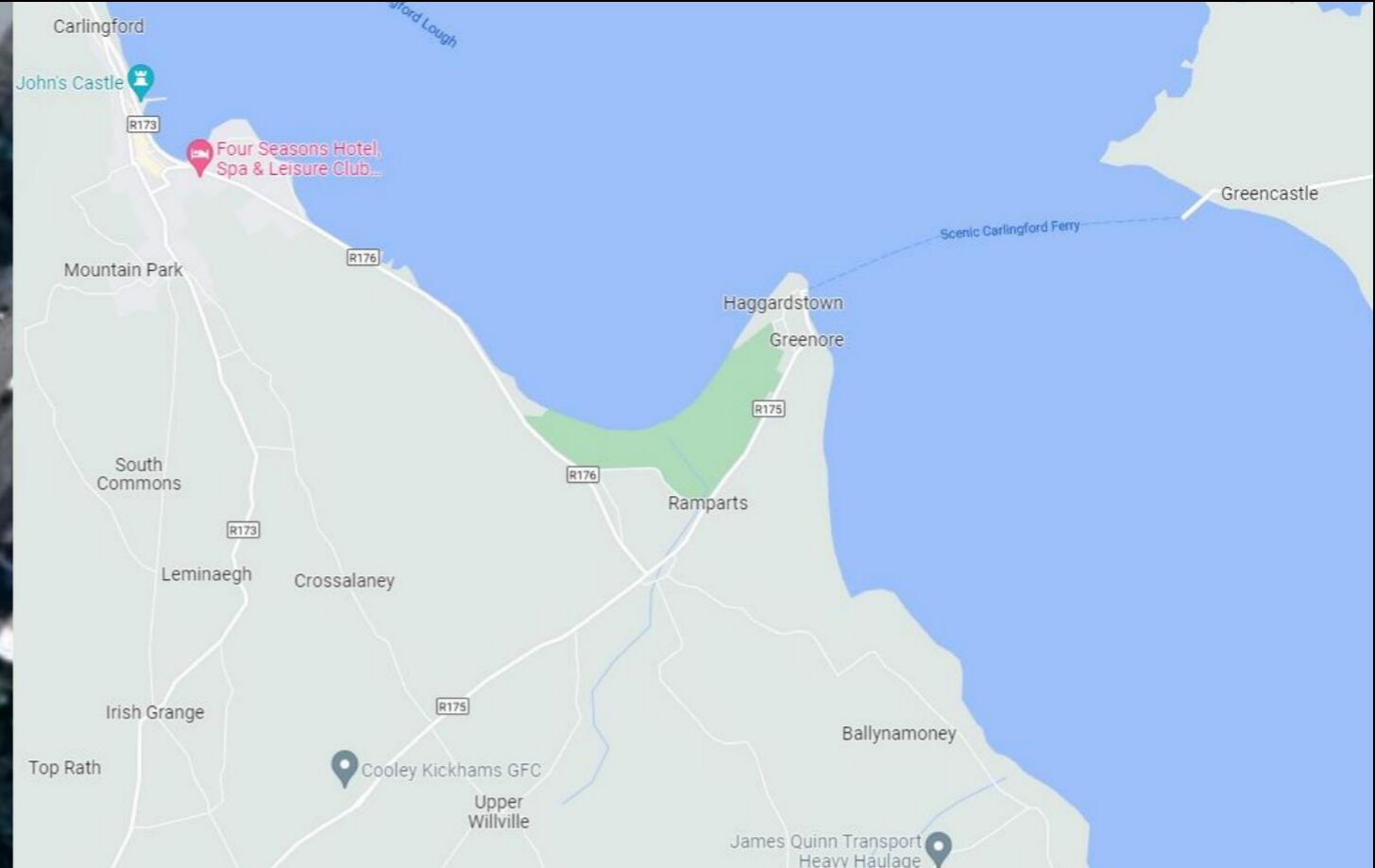


Design Parameter	Type A > 12 hours	Type B < 12 hours	Type C < 15 mins
Advance Warning Signage			
Sign Size (mm)	600	600	-
Sign Visibility (m)	50	50	50
Number of Signs	2	2	-
Cumulative Distance (m)	40	40	-
Distance between Advance Warning Signs (m)	20	20	-
Taper			
Lane Taper Rate ^A	1 in 5	1 in 5	-
Hard Shoulder Taper Rate ^A			-
Cones			
Cone Height (mm)	750	750	-
Taper Spacing (m) ^B	3	3	-
Longitudinal Spacing (m) ^B	3	3	-
Lamps (unlit areas only)			
Taper Spacing (m)	6	6	-
Longitudinal Spacing (m)	6	6	-
Safety Zones			
Longitudinal (m)	5	5	-
Lateral (m)	0.5	0.5	-
Lanes			
Lane Width (m) ^C	3 (2.5)	3 (2.5)	-
Two-way Roadway Width (m)	5	5	-



Legend	
	Cone
	Lateral Safety Zone
	Pedestrian Barriers
	Safety Zone
	Sign location
	Text Box
	Work Area

WK052	WK053	WK070	WK071	WK073	WK072	W111	P085	P011A

Job Details: Footpath upgrade works
 Drawing: Traffic Lights

Title: Greenore, Co.Louth

Scale: N.T.S
 Drawing No: 01

GENERAL NOTES:
 1) ALL INFORMATION CONTAINED IN THIS DRAWING SHOULD BE CHECKED AND VERIFIED BY CONTRACTOR PRIOR TO ANY STAGE OF CONSTRUCTION.
 2) ALL WORKS ARE TO BE CARRIED OUT IN ACCORDANCE WITH LOCAL AUTHORITY REQUIREMENTS AND ARE TO BE INCLUDED IN THE SITE-SPECIFIC SAFETY & HEALTH PLAN.
 3) SITE INSPECTION AND MAINTENANCE OFF THE TRAFFIC MANAGEMENT LAYOUT IS TO BE AGREED WITH LOCAL AUTHORITY TO ENSURE THE SAFETY AND INTEGRITY OF THE DESIGN.
 4) CONTRACTOR TO CARRY OUT A SITE RISK ASSESSMENT PRIOR TO THE INSTALLATION OF ANY TRAFFIC MANAGEMENT PLAN TO ENSURE THAT CONDITION REFLECT THOSE CONSIDERED FOR DESIGN POST SUBMISSION.

5) CONTRACTOR SHALL BE RESPONSIBLE FOR THE PROVISION OF RAMP ACCESS AT ANY CHANGE IN ROAD SURFACE LEVEL WHERE TRAFFIC RUNS ON A TEMPORARY SURFACE, AND FOR PEDESTRIAN/CYCLE RAMPS WHERE FOOTPATH/CYCLE-WAYS HAVE A LEVEL DISCONTINUITY AS PER RESULT OF THE WORKS.
 6) THIS TRAFFIC MANAGEMENT PLAN MAY ONLY BE IMPLEMENTED BY A (TTOS) WHO MUST CARRY OUT A RISK ASSESSMENT BEFORE IMPLEMENTATION. (TTOS) MUST BE IN POSSESSION OF (CSCS) CARD (SIGNING, LIGHTNING AND GUARDING AT ROAD WORKS) CONSTRUCTION REGULATION 2006.

SITE SPECIFIC NOTES:
 (RUNNING LANE WIDTH) 3.0m MINIMUM
 PRIVATE ACCESS TO BE MAINTAINED AT ALL TIME
 PEDESTRIAN TO BE PROTECTED FROM WORKS AREA BY PEDESTRIAN BARRIER SYSTEM.
 PEDESTRIAN RAMP TO BE PROVIDED WHERE NECESSARY FOR DISABLED PEOPLE AND CHILDREN PRAM ACCESS.
 OVERHEAD CABLES SIGN (WK) TO BE USED IF OVERHEAD CABLES BECOME A HAZARD DUE TO WORK LOCATION.
 EXACT SIGNS POSITION TO BE AGREED ON SITE.

Client:

Rev: 01
 Drawn by: I.D
 Date: 20.09.2022