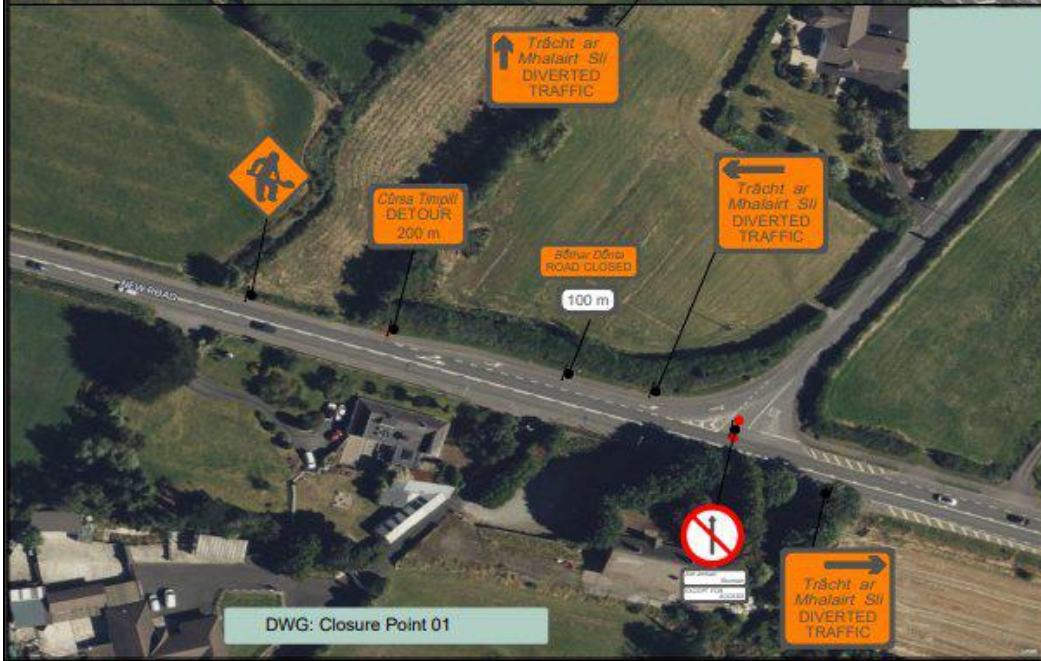


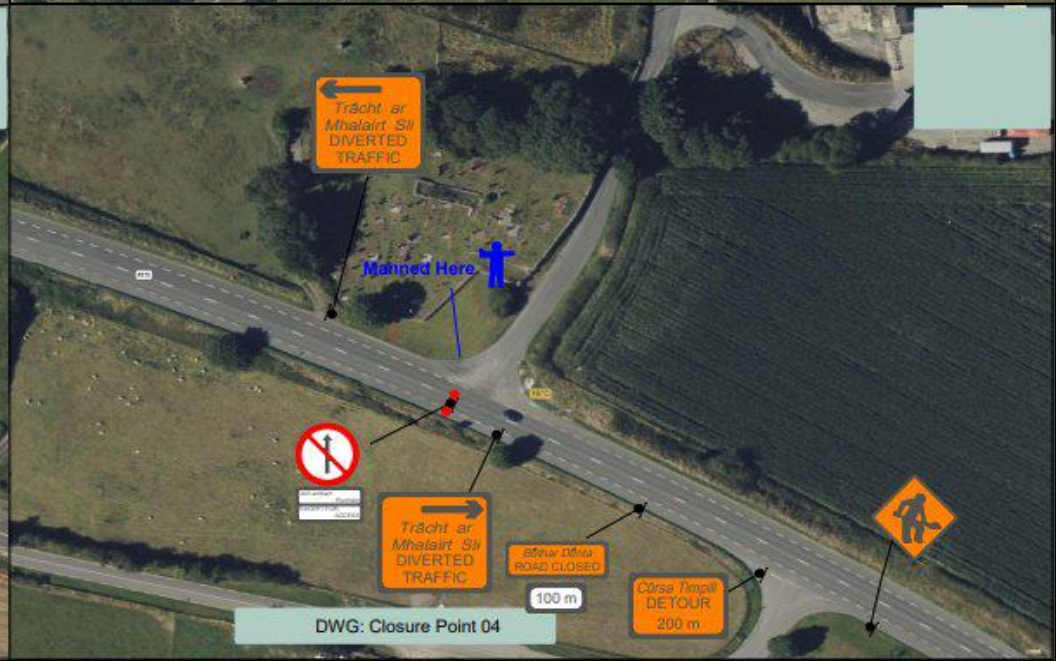
DWG: Closure Point 02



DWG: Closure Point 03



DWG: Closure Point 01



DWG: Closure Point 04

NOTES:
 1. All traffic management to be in accordance with Traffic Signs Manual.
 2. All information contained in this TM Drawing should be checked against the existing Road Geometry to ensure that this traffic management drawing is as per current conditions.
 3. The Temporary Traffic Management Contractor is required to have carried out an on-site risk assessment prior to installation of this TM drawing to ensure that the conditions reflect those considered for the design.
 4. Installation, Maintenance and removal of traffic management will be carried out by Sides SLD trained personnel.
 5. The TTM Designer accepts no responsibility for the results of Chapter 8, TTM Design guidance and TTM operation guidance have not been adhered to in the entirety.
 6. Any reproduction or copying of this Drawing is Prohibited. Any alteration other by the TM designer renders this TTM drawing and information void.

**R173
 Lordship**

PROJECT
 McQuillans
 Resurfacing

DRAWN S. Foreman

SCALE Not to scale | **DIMENSIONS** Metres

Designed By:
 Steven Foreman

Checked by:
 Sean Hallett



221a Hillhall Rd
 Lisburn
 Co. Antrim
 BT27 5JA
 Tel.02892662077