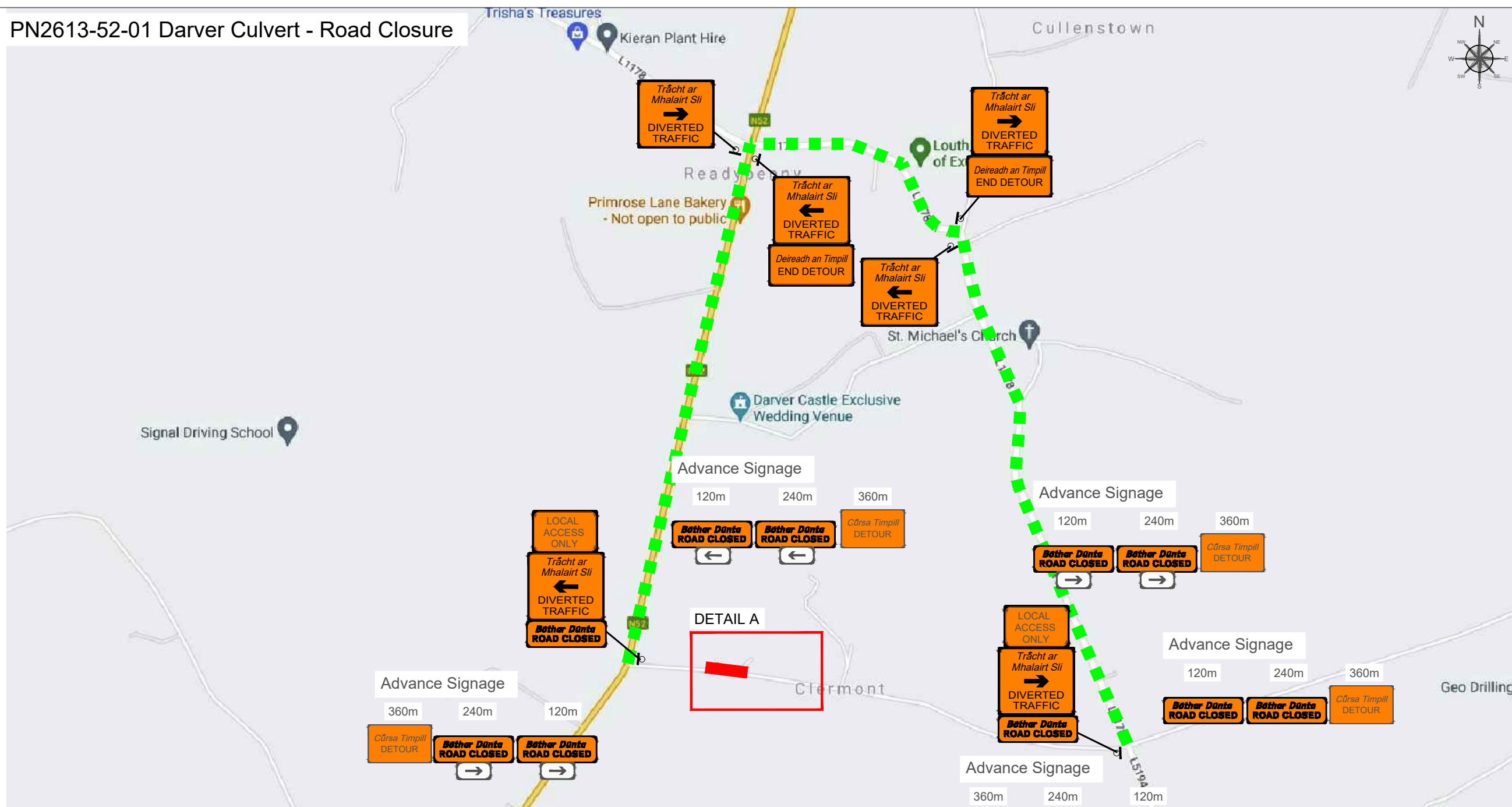


PN2613-52-01 Darver Culvert - Road Closure



DESIGN PARAMETERS

Road Level	- 2 (I)
Roadworks Type	- A
Speed Limit	- 80km/h
Sign Visibility	- 90m
Number of Signs	- 4
Cumulative Distance	- 480m
Distance between:	
advance signs (m)	- 120m
Taper at Lane	- 1 in 40
Taper at HS	- 1 in 40
Max. Cone Spacing:	
At Tapers	- 3m
Longitudinal	- 12m
Cone Height	- 750mm
Max. Lamp Spacing:	
At Tapers	- 6m
Longitudinal	- 24m
Safety Zones:	
Longitudinal	- 45m
Lateral	- 1.2m
Min. Lane Width	- 3.0m
Sign Size	- 600mm

LEGEND:

- WORKS AREA
- SAFETY ZONES
- - - TAPER
- ● ● CONES
- SIGN LOCATION
- BARRIERS
- - - DIVERSION ROUTE

WK 111

WK 062

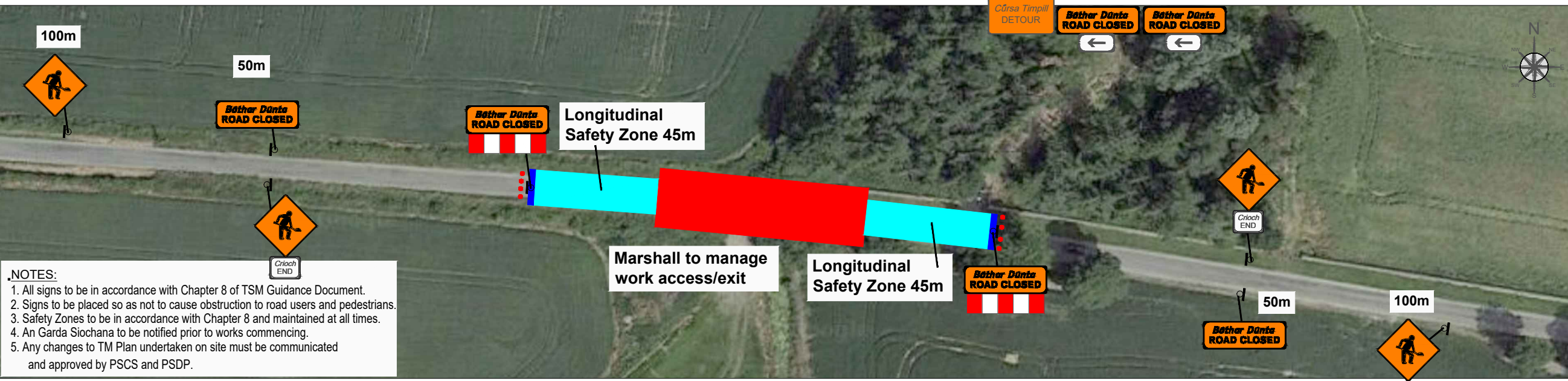
BRUSH INTERLOCK SITE ACCESS

SIGN LOCATION PLACEMENT IS TO BE DECIDED BY THE ONSITE SUPERVISOR, AS TO DETERMINE THE LOCATION FOR THE BEST VISIBILITY AND HIGHEST AWARENESS

MTC
ENGINEERING DESIGN LTD

Road Traffic Management
Design and Planning

www.mtcdesign.ie | info@mtcdesign.ie
Tomasz Stolina
085 141 4024
mtcdesign@bt.ie
Roscroe, Co. Tipperary



- NOTES:**
- All signs to be in accordance with Chapter 8 of TSM Guidance Document.
 - Signs to be placed so as not to cause obstruction to road users and pedestrians.
 - Safety Zones to be in accordance with Chapter 8 and maintained at all times.
 - An Garda Síochána to be notified prior to works commencing.
 - Any changes to TM Plan undertaken on site must be communicated and approved by PSCS and PSDP.

Client: Dancor Civil Engineering Limited

DANCOR
CIVIL ENGINEERING

Project Title: DARVER CULVERT

Drawing Title: Traffic Management Plan Road Closure

Design:	Checked:
TS	
Drawn:	Approved:
TS	
Drawing no.:	Project no.:
1	PN 2613-52
Scale:	Revision:
A3 @ NTS	0
Date:	
	DATE : 22/07/2021